

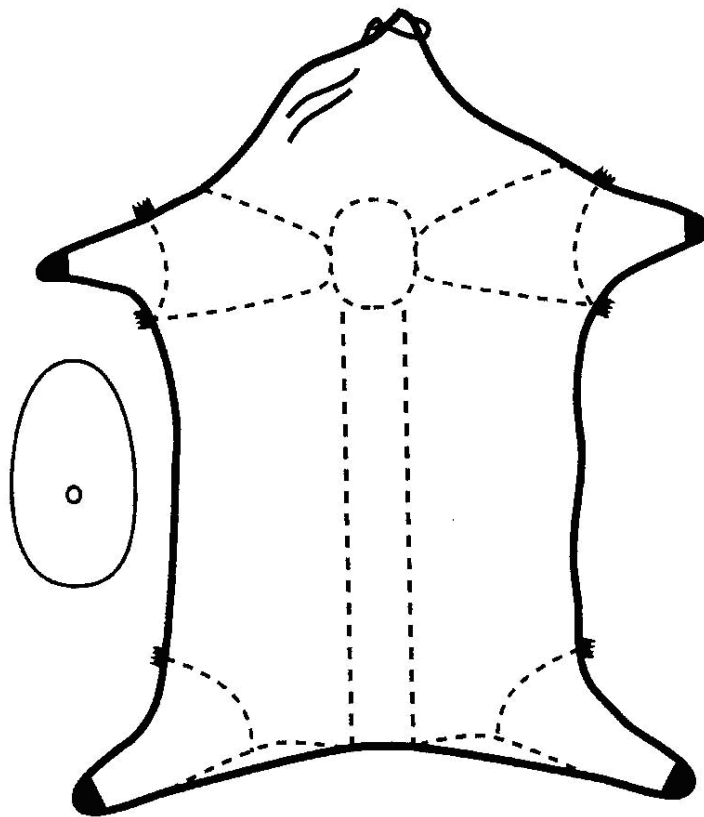
ASSESSMENT TOOL

PARTS OF A FLEECE

Competency	AHCWOL202A	Perform Board Duties
-------------------	------------	----------------------

Trainee Name		Date:	
---------------------	--	--------------	--

Label the diagram below with the parts of a fleece from the list provided. On the following page match one part of the fleece to each description.



© SCAA Shearer Wool Handler Training Inc.

PARTS OF A FLEECE

- Topknot
- Front leg
- Back leg
- Jowl
- Side
- Sweat points
- Neck
- Back
- Shanks
- Wither
- Britches
- Crutch area
- Shoulder
- Belly

Use the list on the previous page to match one part of a fleece to each description.

PARTS OF THE FLEECE	DESCRIPTION
	<ul style="list-style-type: none"> • Finer, shorter wool. Sweat points or frib on edge. May contain burrs or seed.
	<ul style="list-style-type: none"> • Contains most vegetable matter and urine stains in rams and wethers.
	<ul style="list-style-type: none"> • Variable length depending on time of year. May contain urine and dung stain.
	<ul style="list-style-type: none"> • Short wool with tip.
	<ul style="list-style-type: none"> • Short, matted wool. Contains kemp fibres
	<ul style="list-style-type: none"> • Most exposed part of fleece. Staples tend to fall apart allowing entry of dust, sand and water. Sun damage due to loss of protective yolk.
	<ul style="list-style-type: none"> • Short wool without tip.