

THE FOUR PILLARS OF WOOL HANDLING



The **Four Pillars of Wool Handling** were developed by wool handler coaches across Australia and are the core underlying principles of the AWI Skilled Wool Handler Training Program.

To become a competent wool handler one should focus on:

1. TEAM WORK

- » Communication
- » Shed layout - classer and wool handler
- » Table and board organisation
- » Roles and responsibilities
- » Knowing where your mates are at all times

2. TIMING

- » Rhythm
- » Work flow - i.e. Awareness of space
- » Work efficiently
- » Reading the pace

3. TECHNIQUE

How to:

- » Prepare bellies
- » Remove and prepare crutch, shanks and stain
- » Position back leg
- » Set up fleece
- » Pick up fleece
- » Throw fleece
- » Remove brands
- » Skirt efficiently
- » Stack bins
- » Use the paddle
- » Press the bales

Why do we need to do it?

- » Education - shed to market
- » What are the problems?
- » Why is it a problem?
- » When and where do the problems impact?

4. TEMPERAMENT

- » Pride and passion
- » Inner drive
- » Common sense
- » Competitions
- » Social benefits
- » Provide encouragement
- » Focus on the good points of your team mates

TAKE HOME MESSAGES

The major objectives of wool handling are:

- » Adopt the Four Pillars of Wool Handling
- » All crutch wool should be removed on the board
- » Keep a clean and tidy work area
- » Work as part of a team

ALWAYS KEEP THE WORK AREA CLEAN AND TIDY



Four thousand sheep per day were shorn in this 20 stand shed "Cooinbil" NSW above with hardly a lock to be seen and no fleeces on the floor. Adequate staff and teamwork are the key to a well run shed.

CONTAMINATION FOUND IN WOOL BALES



Baling Twine



Metal Objects



Remnants of Jumper

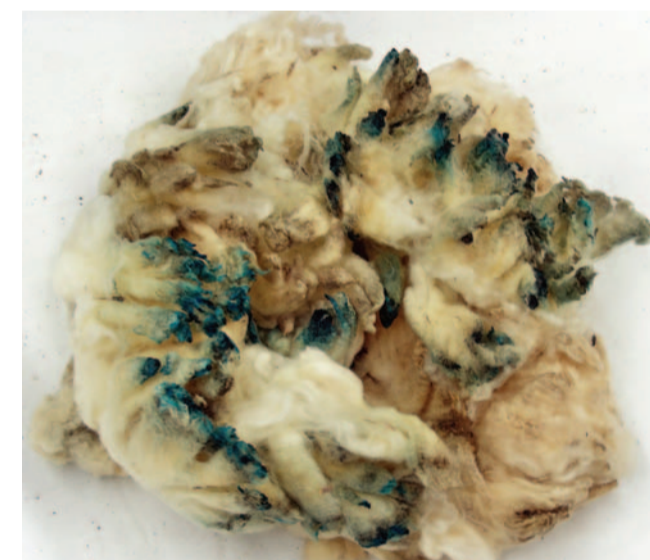
WOOL TYPES TO BE KEPT SEPARATE AT ALL TIMES



URINE STAIN



SHANKS



BRANDS



WATER STAIN



BLACK WOOL



SKIN PIECES

ALWAYS REMEMBER

Never Underestimate the Value of a Well Trained Wool Handler

Disclaimer: The information provided in this publication is general information only. No person should act on the basis of the contents of this publication before obtaining specific, independent professional advice. Australian Wool Innovation Limited will not be liable for any loss, damage, cost or expense suffered by a person arising from the person's reliance upon the contents of this publication.